

**Part List** – (Parts included in ISL adder kit, OE and IC base kits)

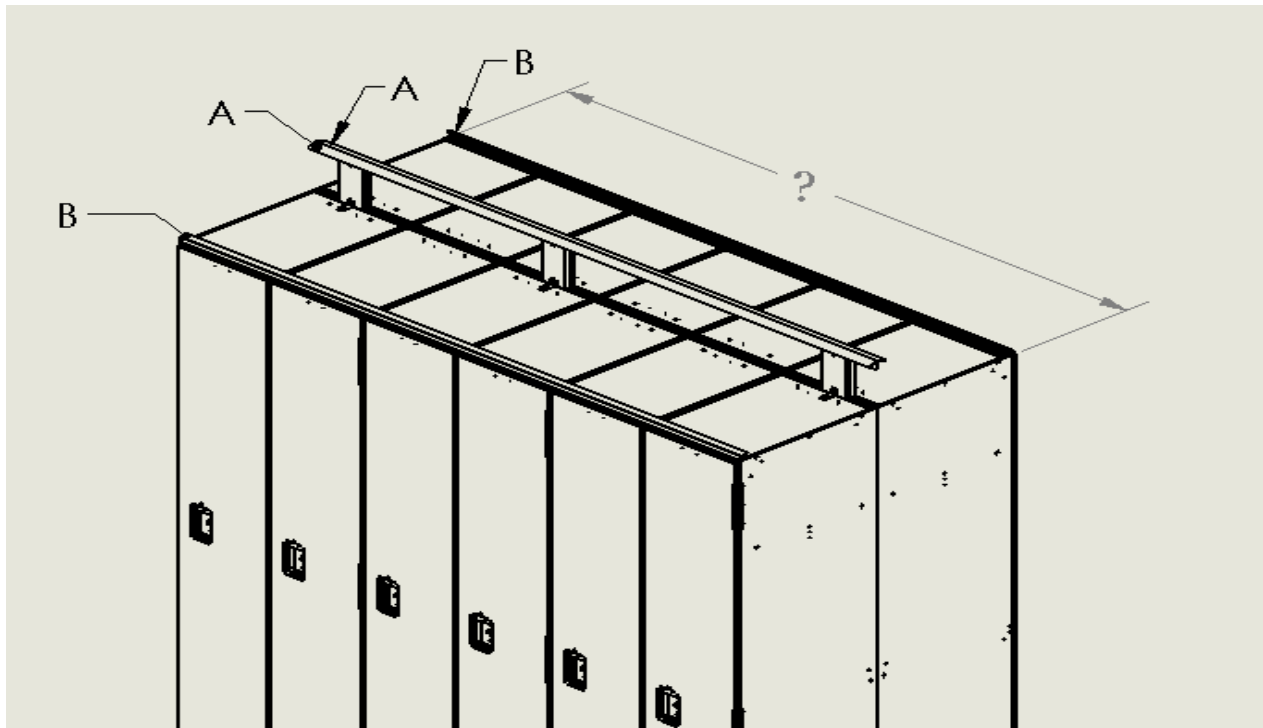
Part	Part #	Description	Qty.
A	11-5432720	Back Support Bracket	2
B	11-5431720	Front Support Bracket	2
C	65-19555	#10-24 x 3/8" F-type Screw	12
D	40-3268750	Shoulder Bolt (Male)	3
E	40-3268690	Barrel Nut (Female)	3
F	11-8872XX-S	Phenolic Slope Top	2
G	65-22637	Angle Bracket "L"	6
H	65-2206-XX (xx=12,15,18)	Phenolic Support Block	6

**Recommended Tools:**

T25 torx bit, T27 pin torx bit, #19 drill bit (.166" dia.), .25" dia. drill bit, Miter Saw, Cordless Drill

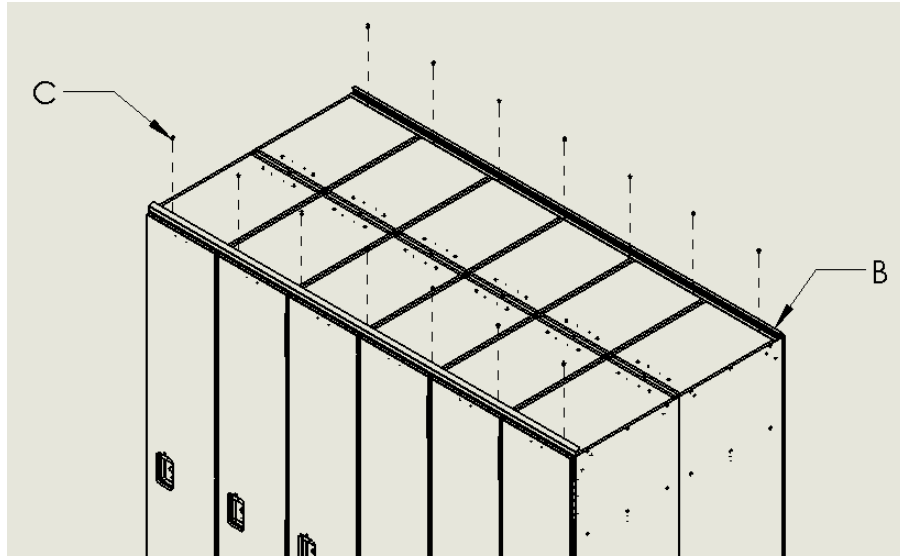
**Step 1**

- Measure run of lockers to determine if cuts are required for the back (A) and the front (B) extruded aluminum slope supports.

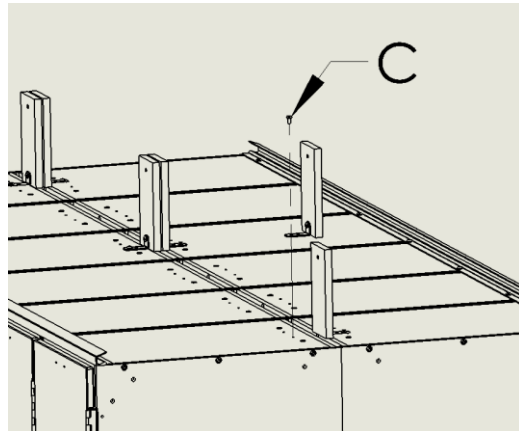
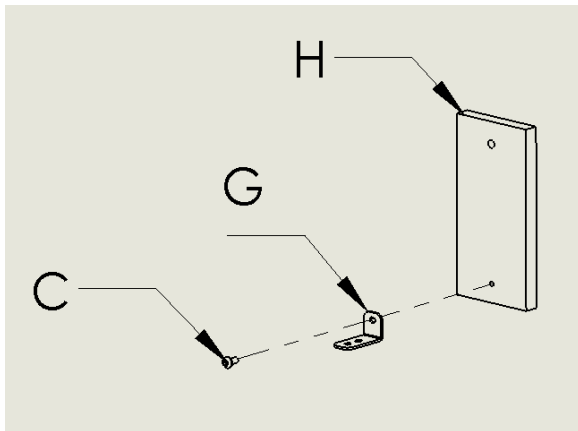


**Step 2**

- Install the front (B) supports using the supplied fasteners (C)
- The aluminum supports should be cut to required length to finish the run. Supports should cover the entire length of the lockers and not protrude past the locker sides.

**Step 3**

- Attach the short leg of the angle brackets (G) to Support block (H) using screws (C)
- Attach 6-support blocks per ea. 72" run to support the back support brackets using screws (C)



Pre-drill holes using a #19 drill bit .166" dia. x .44" deep in the locker top to accept screws (C)

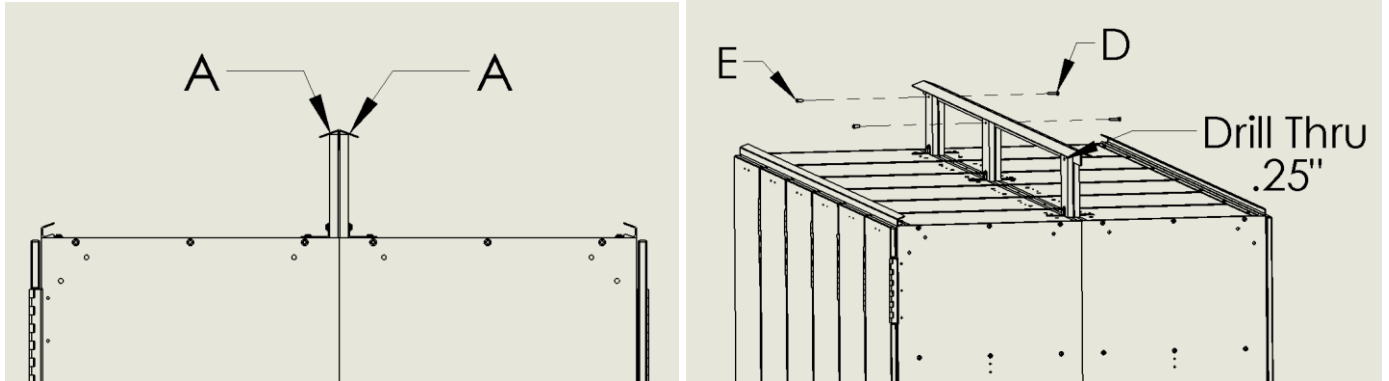
**CAUTION**

*Be careful not to drill into the sides of the the locker when installing extrusions. Drill new holes in extrusion, if it falls on the seam.*

*Do not over-tighten screws*

**Step 4**

- After support blocks are installed, place the two back supports together and slide down in between the support blocks.
- Make sure ends of the back supports are flush with each other and with the side of the lockers.
- Press down firmly and drill a .25" dia. hole thru back supports (A).
- Install shoulder bolt and barrel nut (D & E) to secure back supports to support blocks.

**Step 5**

- Team lift slope top (F) above the supports. Lower the front (flat) edge into support (B)
- Lower the back (angled) edge of the slope top to rest on the back aluminum support (A)
- Continue to place all full length slope tops until cuts are required to finish run.

