

Color-Thru

Premium Material Where Surface Color Goes Through and Through

Price Index: \$\$\$\$



Sahara Beige 4816



Dark Grey 3871



Pastel Grey 3074



Charcoal 3077



Black 2000C

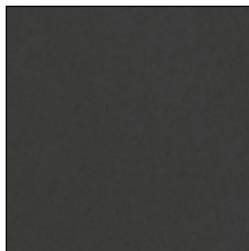
Black Core

More Economically Priced Than Color-Thru Yet Great for Any Environment

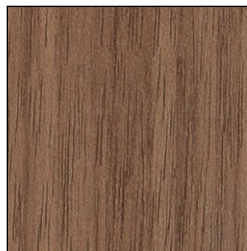
Price Index: \$



*White Ash 1841



Graphite 2150



*Neo Walnut 7954



*Kingswood Walnut
9218



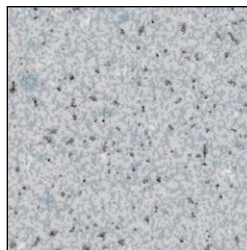
*Asian Night 9550



Taupe 9096



Silver Gray 3000



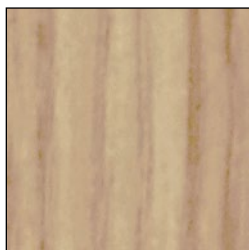
Folkstone Celesta
3300



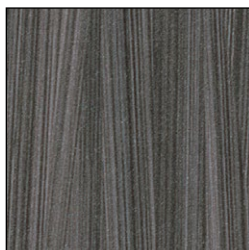
Dove Gray 3010



Graphite Grafix 3020



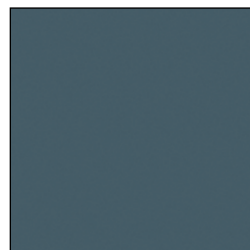
*Aged Ash 9844



*Burnt Strand 5107



*Weathered Ash 9842



Graphite Blue 6944



*Silver Oak Ply 9203

ASI Storage Solutions
 900 Clary Connector
 Eastanollee, GA 30538
 Tel: 706.827.2720 Fax: 706.827.2710
 E-mail: info@asi-storage.com
 Web: asi-storage.com

*Actual colors may vary slightly from those shown due to limitations in the printing process.
 Directional Pattern – Lockers will have the directional grain running vertically, from the base of the locker to the top.